

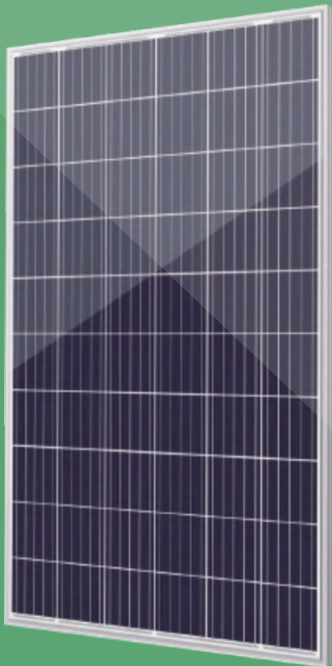
# LUXPOWER<sup>®</sup>

## POLY

### 270-290w

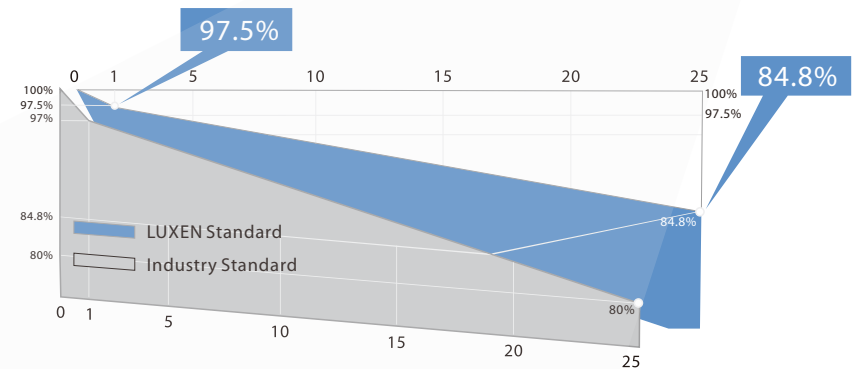
Premium modules of LUXPOWER series with varied power ratings are suitable for all types of systems, from small-scale private roof systems to large-scale solar power farms. All LUXPOWER solar modules have the CE statement of approval and the IEC 61215 & IEC 61730 certificates.

## 60 cells



## LINEAR PERFORMANCE WARRANTY

25-year power warranty · 12-year product warranty



ISO9001:2015 QMS  
ISO14001:2015 EMS  
ISO45001:2018 OHSMS



IEC61215 & IEC61730  
standard quality



Higher efficiency & Lower power degradation  
2% less power reduction in the 1st year



Wind load up to 3800Pa  
Snow load up to 5400Pa



0-5W positive power sorting



Stable performance under  
weak light conditions



Salt mist and ammonia corrosion  
tests passed



Tier 1 Solar Module  
Manufacturer by BNEF



# POLY 270-290w 60 cells

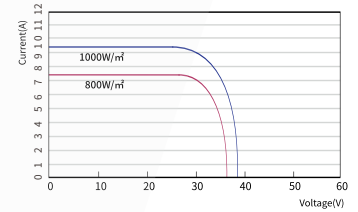
# LUXEN

## ELECTRICAL PARAMETERS

	LNSE-270P		LNSE-275P		LNSE-280P		LNSE-285P		LNSE-290P	
	STC	NMOT	STC	NMOT	STC	NMOT	STC	NMOT	STC	NMOT
Maximum Power (Pmax)	270W	200W	275W	204W	280W	207W	285W	211W	290W	214W
Open Circuit Voltage (Voc)	37.89V	35.63V	38.19V	35.95V	38.47V	36.22V	38.86V	36.51V	39.18V	36.79V
Short Circuit Current (Isc)	9.24A	7.27A	9.32A	7.33A	9.41A	7.40A	9.47A	7.46A	9.54A	7.53A
Voltage at Maximum Power (Vmpp)	31.11V	29.33V	31.36V	29.57V	31.64V	29.66V	31.89V	29.84V	32.14V	30.00V
Current at Maximum Power (Impp)	8.68A	6.82A	8.77A	6.90A	8.85A	6.98A	8.94A	7.06A	9.02A	7.14A
Module Efficiency(%)	16.60%		16.90%		17.21%		17.52%		17.83%	

STC: Irradiance 1000W/m<sup>2</sup>, cell temperature 25°C, AM 1.5G  
 NMOT: Irradiance 800W/m<sup>2</sup>, ambient temperature 20°C, wind speed 1m/s, AM 1.5G

LNSE-280P/I-V



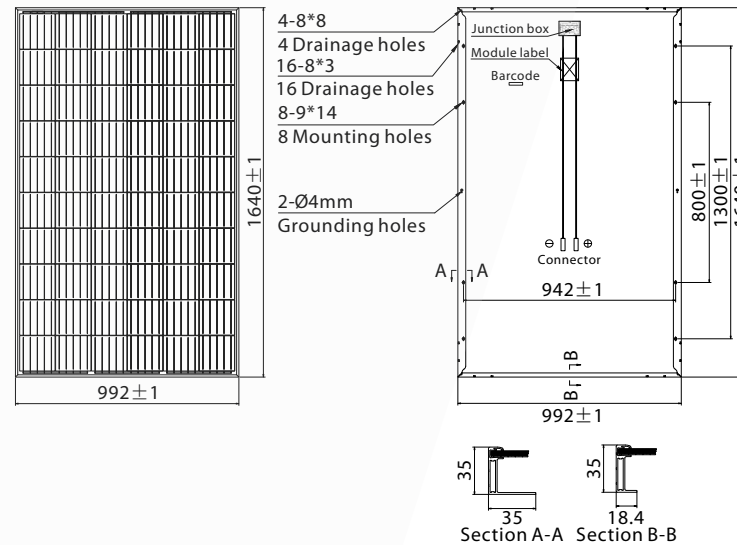
Operating Module Temperature	-40°C to +85°C
Maximum System Voltage	1500V DC(IEC)
Maximum Series Fuse Rating	20A
Power Tolerance	0/+5W
<b>Temperature Characteristics</b>	
Nominal Operating Cell Temperature(NMOT)	45±2°C
Temperature Coefficient of Pmax	-0.36%/°C
Temperature Coefficient of Voc	-0.28%/°C
Temperature Coefficient of Isc	+0.05%/°C

## Packing Configuration

Container	20'GP	40'HQ
Pieces per pallet	31	31
Pallets per container	12	28
Pieces per container	372	868

## Mechanical Characteristics

Solar Cell	POLY156.75x156.75mm
No. of Cell	60(6x10)
Dimensions	1640x992x35mm
Weight	17.5kgs
Front	3.2mm coated tempered glass
Frame	Anodized aluminium alloy
Junction Box	Ip68 rated(3 by pass diodes)
Output Cables	4.0mm <sup>2</sup> symmetrical length 900mm
Connectors	MC4 compatible
Mechanical load test	5400Pa



LUXEN SOLAR ENERGY CO., LTD  
 T:+86 512 6708 1572  
 F:+86 512 6708 1570  
 sales@luxensolar.com  
 www.luxensolar.com

Note: Due to continuous technical innovation, R&D and improvement, technical data above mentioned may be of modification accordingly. LUXEN SOLAR have the sole right to make such modification at anytime without further notice.

