

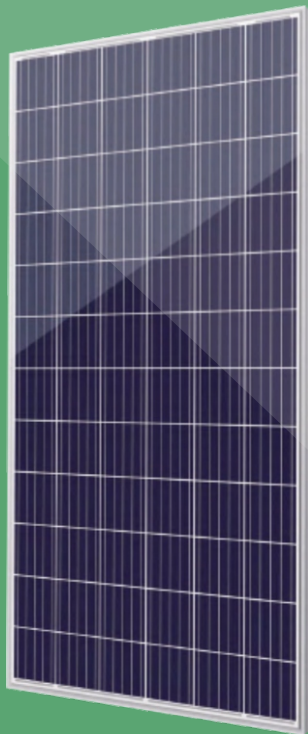
LUXPOWER[®]

MONO

350-370w

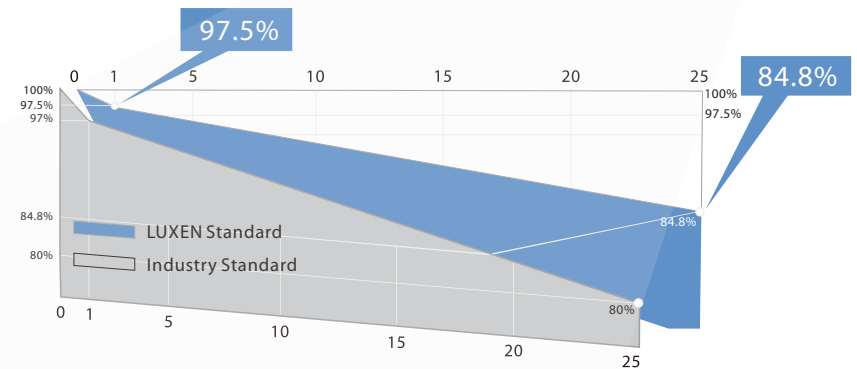
Premium modules of LUXPOWER series with varied power ratings are suitable for all types of systems, from small-scale private roof systems to large-scale solar power farms. All LUXPOWER solar modules have the CE statement of approval and the IEC 61215 & IEC 61730 certificates.

72 cells



LINEAR PERFORMANCE WARRANTY

25-year power warranty · 12-year product warranty



ISO9001:2015 QMS
ISO14001:2015 EMS
ISO45001:2018 OHSMS



IEC61215 & IEC61730
standard quality



Higher efficiency & Lower power degradation
2% less power reduction in the 1st year



Wind load up to 3800Pa
Snow load up to 5400Pa



0-5W positive power sorting



Stable performance under
weak light conditions



Salt mist and ammonia corrosion
tests passed



Tier 1 Solar Module
Manufacturer by BNEF



MONO 350-370w 72 cells

LUXEN

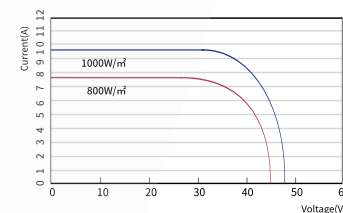
ELECTRICAL PARAMETERS

	LNSF-350M		LNSF-355M		LNSF-360M		LNSF-365M		LNSF-370M	
	STC	NMOT	STC	NMOT	STC	NMOT	STC	NMOT	STC	NMOT
Maximum Power (Pmax)	350W	256W	355W	260W	360W	264W	365W	268W	370W	272W
Open Circuit Voltage (Voc)	47.26V	43.47V	47.61V	43.81V	47.96V	44.15V	48.31V	44.49V	48.65V	44.78V
Short Circuit Current (Isc)	9.61A	7.64A	9.66A	7.69A	9.72A	7.75A	9.77A	7.80A	9.83A	7.86A
Voltage at Maximum Power (Vmp)	38.61V	35.31V	38.83V	35.62V	39.05V	35.92V	39.26V	36.22V	39.47V	36.51V
Current at Maximum Power (Imp)	9.07A	7.25A	9.14A	7.30A	9.22A	7.35A	9.30A	7.40A	9.37A	7.45A
Module Efficiency(%)	18.04%		18.30%		18.55%		18.81%		19.07%	

STC: Irradiance 1000W/m², cell temperature 25°C, AM 1.5G

NMOT: Irradiance 800W/m², ambient temperature 20°C, wind speed 1m/s, AM 1.5G

LNSF-360M/I-V



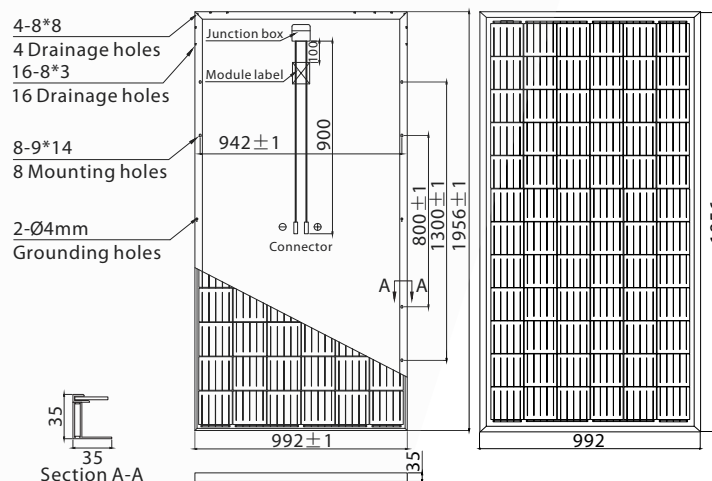
Operating Module Temperature	-40°C to +85°C
Maximum System Voltage	1500V DC(IEC)
Maximum Series Fuse Rating	20A
Power Tolerance	0/+5W
Temperature Characteristics	
Nominal Operating Cell Temperature(NMOT)	45±2°C
Temperature Coefficient of Pmax	-0.36%/°C
Temperature Coefficient of Voc	-0.28%/°C
Temperature Coefficient of Isc	+0.05%/°C

Packing Configuration

Container	20'GP	40'HQ
Pieces per pallet	31	31
Pallets per container	10	24
Pieces per container	310	744

Mechanical Characteristics

Solar Cell	MONO156.75x156.75mm
No.of Cell	72(6x12)
Dimensions	1956x992x35mm
Weight	21.0kgs
Front	3.2mm coated tempered glass
Frame	Anodized aluminium alloy
Junction Box	Ip68 rated(3 by pass diodes)
Output Cables	4.0mm ² symmetrical length 900mm
Connectors	MC4 compatible
Mechanical load test	5400Pa



LUXEN SOLAR ENERGY CO., LTD
 T:+86 512 6708 1572
 F:+86 512 6708 1570
 sales@luxensolar.com
 www.luxensolar.com



Note: Due to continuous technical innovation, R&D and improvement, technical data above mentioned may be of modification accordingly. LUXEN SOLAR have the sole right to make such modification at anytime without further notice.